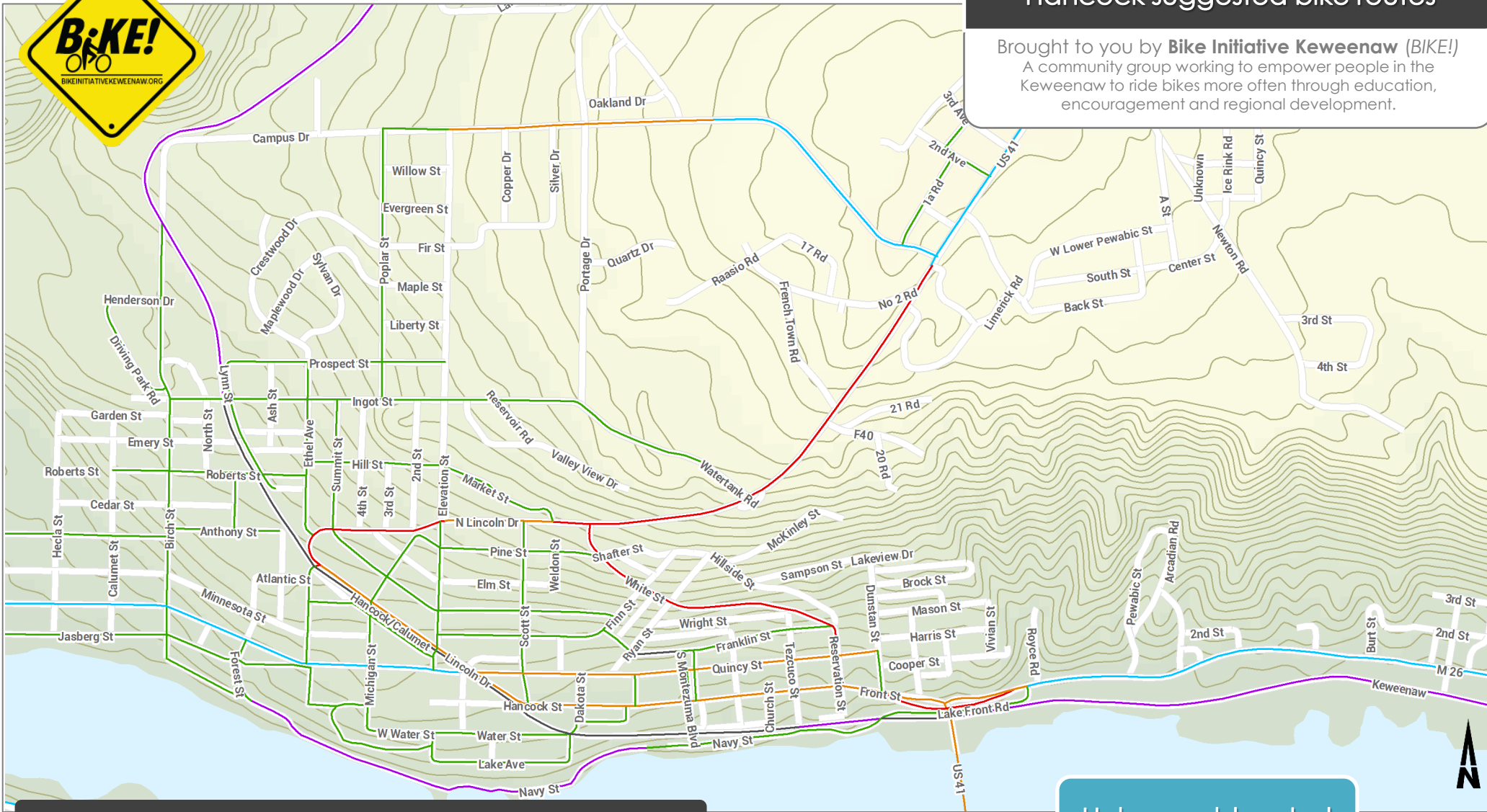




# Hancock suggested bike routes

Brought to you by **Bike Initiative Keweenaw (BIKE!)**  
 A community group working to empower people in the Keweenaw to ride bikes more often through education, encouragement and regional development.



Road segments have been colored to designate suggested use.



Off Street Unpaved Path

Off Street Paved Path

Neighborhood, designated bike lane, bike boulevard

Wide Shoulder (> 4ft)

Narrow Road with bike-able sidewalk

Narrow Road limited or no shoulder (<4ft)

Help us add routes!

[Bikeinitiativekeweenaw.org](http://Bikeinitiativekeweenaw.org)

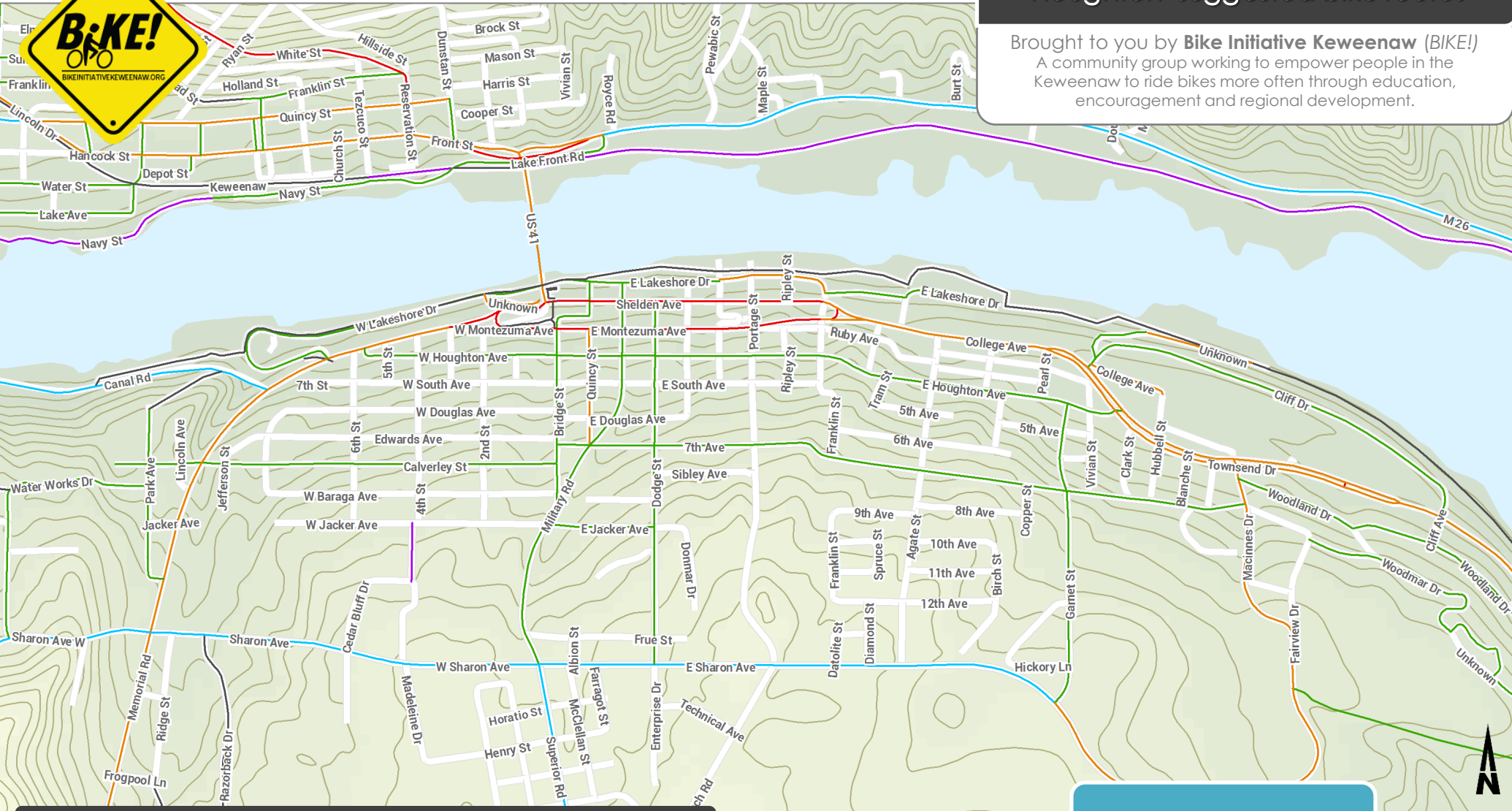
**Bike Initiative Keweenaw (BIKE!)** reminds all riders to **obey applicable traffic laws, bike defensively, and always wear a helmet.**

These maps were developed by volunteers, based on road conditions observed in the summer of 2013, but there are no **officially recommended routes** by the cities of Houghton or Hancock, or by the BIKE! organization. Be aware that conditions may change based on weather, road construction and other factors. To learn more, please visit [Bikeinitiativekeweenaw.org](http://Bikeinitiativekeweenaw.org)



# Houghton suggested bike routes

Brought to you by **Bike Initiative Keweenaw (BIKE!)**  
A community group working to empower people in the Keweenaw to ride bikes more often through education, encouragement and regional development.



Road segments have been colored to designate suggested use.

Help us add routes!

-  Off Street Unpaved Path
-  Off Street Paved Path
-  Neighborhood, designated bike lane, bike boulevard
-  Wide Shoulder (> 4ft)
-  Narrow Road with bike-able sidewalk
-  Narrow Road limited or no shoulder (<4ft)

[Bikeinitiativekeweenaw.org](http://Bikeinitiativekeweenaw.org)

These maps were developed by volunteers, based on road conditions observed in the summer of 2013, but there are no **officially recommended routes** by the cities of Houghton or Hancock, or by the BIKE! organization. Be aware that conditions may change based on weather, road construction and other factors. To learn more, please visit [Bikeinitiativekeweenaw.org](http://Bikeinitiativekeweenaw.org)

**Bike Initiative Keweenaw (BIKE!)** reminds all riders to **obey applicable traffic laws, bike defensively, and always wear a helmet.**